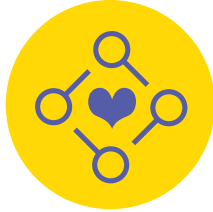




No child should grieve alone.

Caring for community members is a key element of our mission at The Elizabeth Hospice. Highly trained, compassionate professionals and volunteers in our Children's Bereavement Program support children through their grief and loss. Services are *free of charge* and *open to everyone* in San Diego County and Southwest Riverside County.



Children's Grief Support Groups

Bimonthly, 90-minute, evening sessions
Concurrent parent/guardian groups
Escondido and Mission Valley locations
Ages 3 to 17



Camp Spero

Grief-related activities
Traditional camp fun
Newcomer and Alumni camps
Ages 7 to 17



School-Based Grief Support Groups

8-week, onsite program
20 school districts
Preschool to Grade 12



Community Grief Education & Support

Crisis intervention for students and faculty
Grief and loss training for professionals
Speaking engagements

*All programs will be conducted via Zoom until the COVID-19 health restrictions have been lifted.
For more information, contact grievingchildren@ehospice.org.*



The Elizabeth Hospice
elizabethhospice.org | 800.797.2050